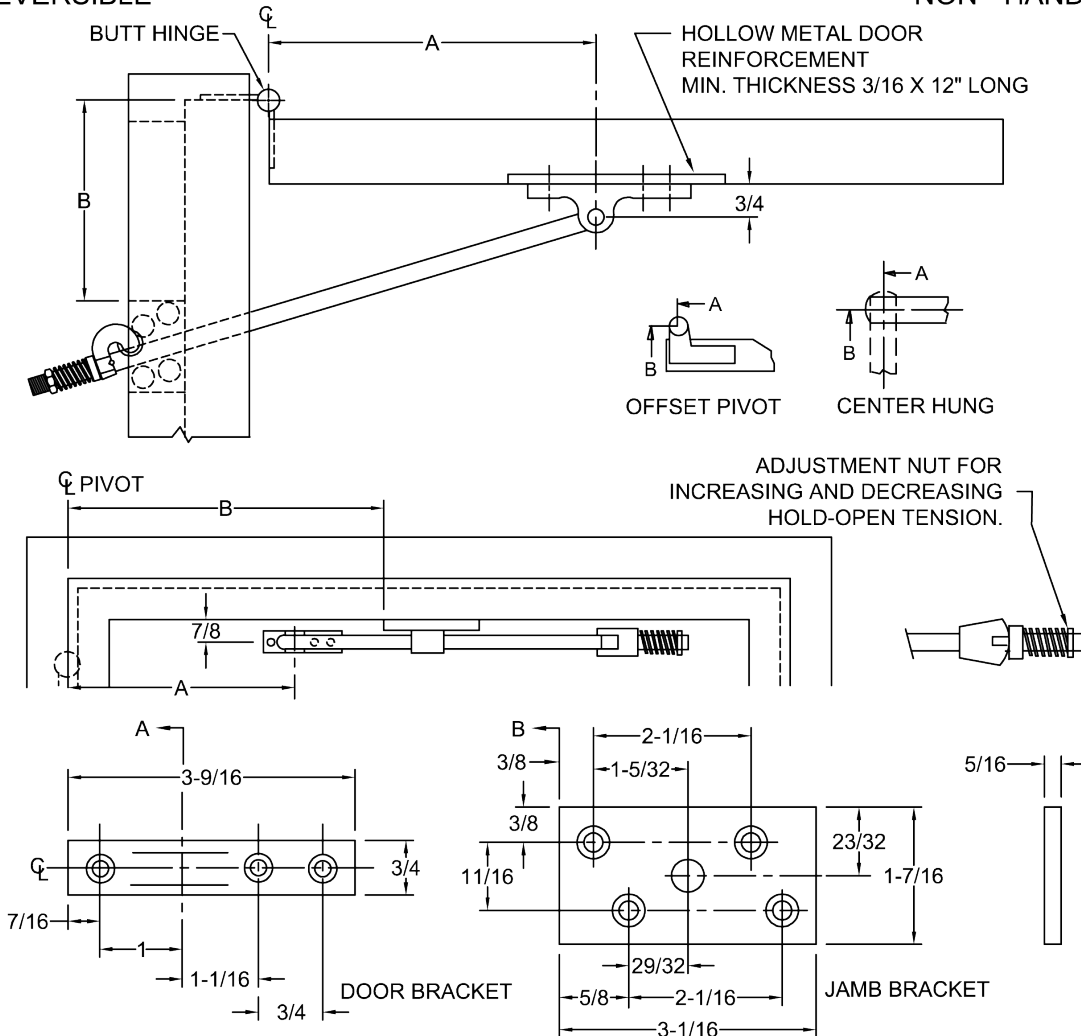


7000 SERIES HEAVY DUTY HOLDERS & STOPS

REVERSIBLE

NON - HANDED



NOTE: ALL A & B DIMENSIONS MEASURED FROM ϕ OF PIVOT.

SCREW DETAIL			
	QTY	WOOD	METAL
JAMB	4	No. 14 X 1- $\frac{1}{2}$ " F.H.W.S.	$\frac{1}{4}$ " - 20 x $\frac{3}{4}$ " F.H.M.S.
DOOR	3	$\frac{1}{4}$ " - 20 THRU BOLT W/ GROMMET NUT, LENGTH TO SUIT DOOR THICKNESS	$\frac{1}{4}$ " - 20 THRU BOLT W/ GROMMET NUT, LENGTH TO SUIT DOOR THICKNESS

ALWAYS REQUEST LATEST TEMPLATE DRAWINGS FOR NEW INSTALLATIONS

DO NOT SCALE DRAWINGS ALL DIMENSIONS ARE IN INCHES